

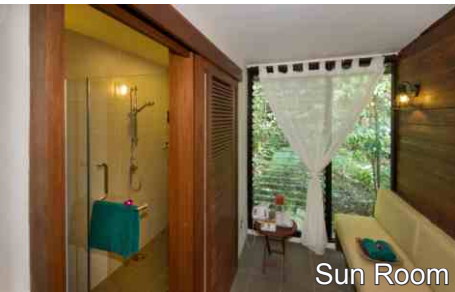
ROOM FACILITIES



Twin Room



Double Room



Sun Room



Natural Bath Kit

- 20 Guestroom
- Double and Twin sharing
- Room size : 270sq ft
- Sun room (rainforest view)
- Ceiling fan
- Coffee & tea making facility
- Attached bathroom
- Solar-heated shower
- Clean towel and linen
- Natural bath kit
- Turn down service
- Dressing table
- Disabled friendly room
- Mosquito netting
- Daily housekeeping

Items Upon Request

- Hair dryer
- Iron & ironing board

ECOLOGDE FACILITIES



Elephant pass



Gecko Lounge



Melapi Restaurant



Gomantong Hall

- Gift Shop
- Mini Library
- Free Wifi at the Gecko Lounge
- Gecko Lounge and Reception area
- Kari Boardwalk (named after the late land owner)
- Information Gallery
- Bird and wildlife viewing decks
- 24 hours security
- Gomantong Hall
- Enclosed hanging garden
- Safe box at the front office
- Melapi Restaurant and jetty complete with sunset deck
- 1,500 ft long covered Hornbill Boardwalk complete with two elephant "passes"

CONTACT

Tel: 60-88-438300

Fax: 60-88-438307

Skype: borneoecotours

E-mail: info@sukau.com

Website: www.sukau.com

Corporate & Mailing Address:

Lot 1, Pusat Perindustrian, Kolombong Jaya, Mile 5.5,
Jalan Kolombong, 88450 Kota Kinabalu,
Sabah, Malaysia.



SUKAU RAINFOREST LODGE

Saving Paradise



Asia's Leading Green Hotel



LEGEND

River Route(92 Km) 2 1/2 hours boat ride from Sandakan Jetty

Land Route(130 Km) 2 hours overland journey from Sandakan, followed with 10 minutes boat ride

Find us on google map ([Click HERE](#))



SAVING PARADISE

Sukau in the [Kinabatangan Basin](#) is a mixture of private land, forest reserve and wildlife sanctuary. Illegal logging, rapid conversion of private land into palm oil plantation and over polluting of the Kinabatangan River are some of the challenges faced in conservation effort in the areas.



River cruise with electric motor



River Cruise



Wild Orang Utan

RESPONSIBLE TRAVEL: HOW YOUR STAY WITH US CAN MAKE A DIFFERENCE

Sukau Rainforest Lodge have set up its own [Green Policies](#) and [Code of Practice](#) in ensuring that its operation is low environmental and wildlife impact while adding economic value to the local community.

For every international guest who stays with us, we donate RM 4 per adult to non-profit [Borneo Ecotourism Solutions and Technologies \(BEST\) Society](#) for our community and conservation projects. Borneo Eco Tours also contributes RM8 per guest. In addition, RM 20 from guest' tour purchase of Kinabatangan will be set aside for BEST Conservation Levy for projects in Sabah.

Take part in rehabilitating the riverine area through [tree planting projects](#).



Tree Planting

BESTSELLER PACKAGE

3D/2N Kinabatangan Wildlife Safari

Highlights:

Visit Sepilok Orang Utan Rehabilitation Centre for the morning feeding of orang utan, 3 river cruises in search of wildlife along Kinabatangan river, visit the historical Sandakan city, authentic ecolodge stay with full board meals and chances to participate in conservation effort. Rejuvenating Foot Spa Treatment, Night Cruise and Gomantong Cave visit are available at a surcharge.

What to bring:

Sun block lotion, personal toiletries, torch light, insect repellent, drinking water bottle walking shoes, thong/sandals, binoculars, camera, hat & raincoat.

Click [HERE](#) for more information



USEFUL LINKS:

[Travelers Feedback](#)

[Travelling Tips](#)

[Gallery](#)

[News & Updates](#)

[Awards & Accolades](#)

[Kinabatangan Basin](#)

[Conservation Fellows](#)



Sukau Rainforest Lodge

Photo Credit to Albert Teo, Brett Taylor, Chris Dearden, Peter Lange